



FALL WINTER 2022 / 23





**FALL WINTER
2022 / 23**



INDIA PRODUCTION UNIT

WHO WE ARE

We, AVANTI & PRARA LEATHERS, with over 25 years of experience in leather making we as a company began Finished Leather business in 2013 in India with a passion for leather manufacturing with a solid and controllable base of raw materials which makes us world class Finished leather makers with an Italian aroma.

We are a top quality small skin suede and grain leather producer providing sustainable ecology to future generations with our strong technical capabilities.

We integrate environmental and social principles in our businesses, ensuring that what comes from nature goes back to nature and people.

OUR VISION

To be the top-quality producer of High fashion, environment friendly and sustainable Finished leather from our world Class manufacturing facilities. We will continue to be Value creators to our customers worldwide.

To be globally No #1 Fashion Finished leather producers from India in small skins (Goat & sheep) by 2025.

OUR MISSION

To be the most sustainable and reliable partners of the fashion leather industry taking the environment as a major factor. Lead developers and front runners in Eco friendly and Biodegradable leathers with our Responsibility to environment.

And catering to premium brands and consumers as a milestone in to our business that delivers value through Integrity in Business and Excellence in products and services.

"To be a responsible value creator for all our stakeholders".

FALL WINTER 2022 / 23



ONIRIC DREAM

FALL WINTER 2022 / 23



REVOLUXE

FALL WINTER 2022 / 23



REROOTED

FALL WINTER 2022 / 23



RETHINK

FALL WINTER 2022 / 23



ONIRIC DREAM

SPONGY SUEDE | SENSITIVE & SOFT | ENVELOPING | WAVY & MATT



REROOTED

VEGETAL FIBRES | USED & BURNT | BIODEGRADABLE | RECYCLED WASTE | WET & MOVE



REVOLUXE

TRANSPARENT | SPARKLING | GOLD & WOOD



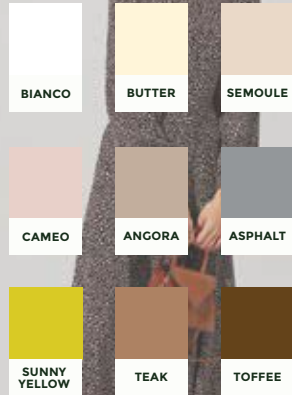
RETHINK

WEATHER STRONG | GRANULATED | RECOLORED



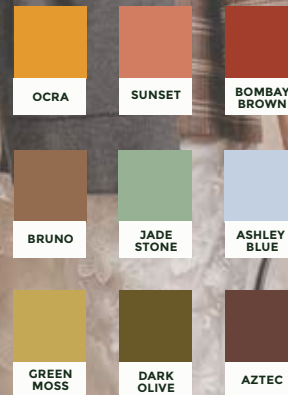
ONIRIC DREAM

FALL WINTER 2022/23



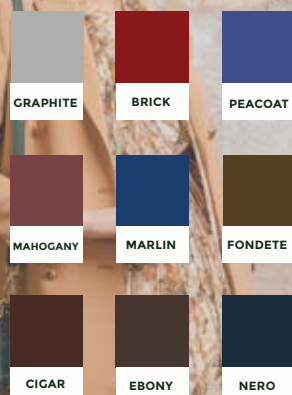
REROOTED

FALL WINTER 2022/23



REVOLUXE

FALL WINTER 2022/23



RETHIK

FALL WINTER 2022/23



KEY COLORS



ANGORA



GRAPHITE



TEAK



MAHOGANY



BROWNIE



MARLIN



CIGAR



EBONY



**AVANTI
PRARA**
Fall Winter
2022/23



ARTICLE INDEX

COOL CLASSICS

ETNA SUEDE/ QUEEN SUEDE/
CF SUEDE/ MF SUEDE /WP SUEDE
SILK LUX/JUMBO SILK
MEXICAN KID NATURAL
GENEVERA
CLEAR KID
MORBIDO
CAPRA SMALTO
EMILY NAPPA
JERICHO

ETHEREAL CASUALS

TRAPPER
DEER GOAT
DEER SHEEP
ALPINE
BURRO

AKYUA NABUK
ROXY
STROMBOLI
CREPITIO
GOLDDUST
MAREL CROCO
MAREL SAICOS



SUSTAINABLE COLLECTIONS

OLIVE TANNAGE

OLV HELENA
OLV SONATA



ECO FRIENDLY

LUVA CF
VIRA
MONTAE
PARKA
MALTA



BIODEGRADABLE

MADRID
AMARA KID
CALEO
KANO
TEXAS
PONCHO
CYRUS
JUPITER
POP CRUNCH
VERTICAL CRUNCH



COOL CLASSICS



ETNA SUEDE/ QUEEN SUEDE/
CF SUEDE/ MF SUEDE /WP SUEDE
SILK LUX/JUMBO SILK
MEXICAN KID NATURAL
GENEVERA



CLEAR KID
MORBIDO
CAPRA SMALTO
EMILY NAPPA
JERICO



**ETNA SUEDE/ QUEEN SUEDE/
CF SUEDE/ MF SUEDE /WP SUEDE**



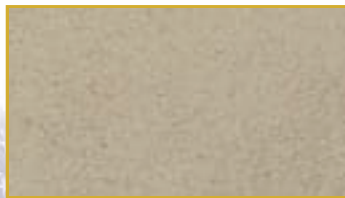
**SUNNY
YELLOW**



EBONY



TEAK



ANGORA



GRAPHITE

Fine nap with an electrifying appearance combined with silky touch and wet hand feel.

C S T O

Color range : ALL

Size : 2.5-4.0SF, 3.0-5.0SF, 4.5-7.0SF

Thickness : 0.6/0.8mm, 0.7/0.9mm

Oil Content : 6-8%

SILK LUX/JUMBO SILK



FLARE RED



FUSCHIA



BURNT WOOD



ORANGE



DEEP BLUE

Suedes in combination with Velvety and silky hand feel contribute to wide usage in shoes, booties and boots. Good nap and available in different specs.

C S T O

Color range : ALL
Size : 4.0-6.0SF, 6.0-9.0SF
Thickness : 0.6/0.8mm, 0.7/0.9mm
Oil Content : 6-8%



MEXICAN KID NATURAL



MAHOGANY



TEAK



CIGAR



EBONY



NERO

As it shows the natural semi gloss full grain, adding a level of surface interest to the leather category that has been so widely used in recent seasons.

C S T O

Color range : ALL
Size : 3.0-4.5SF
Thickness : 0.7-0.8mm
Oil Content : 6-8%



GENEVERA



TEAK



BROWNIIE



EBONY



MAHOGANY



MARLIN

The fineness of the natural grain with the round and soft feel coupled with distinctive shine makes it an ideal material for elegant shoe creation.

C S T O

Color range : ALL

Size : 2.5-4.0SF

Thickness : 0.6-0.8mm

Oil Content : 6-8%



CLEAR KID



POLO TAN



CIGAR



EBONY



MAHOGANY



MARLIN

Fineness of natural grain coupled with distinctive shine makes it an ideal material for elegant shoe creation.

C S T O

Color range : ALL
Size : 2.5-3.50SF
Thickness : 0.7-0.8mm
Oil Content : 6-8%



MORBIDO



MARLIN



MAHOGANY



TEAK



CIGAR



EBONY

Supremely soft and supple this goat nappa displays a fineness of grain.

C S T O

Color range : ALL

Size : 3.5-5.5SF

Thickness : 0.7-0.8mm

Oil Content : 6-8%



CAPRA SMALTO



MOLTEN LAVA



FESTIVAL FUSCHIA



MAIZE



DEEP LAKE



DARK CITRON

Fineness of natural grain coupled with distinctive shine makes it an ideal material for elegant shoe creation.

C S T O

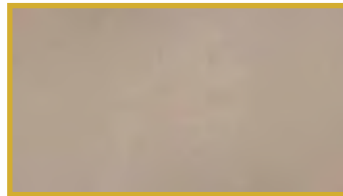
Color range : ALL
Size : 3.5-6.0SF
Thickness : 0.7-0.9mm
Oil Content : 6-8%



EMILY NAPPA



CIGAR



ANGORA



EBONY



TEAK



MARLIN

Wool warm & soft feel makes it ideal for the shoes where comfort is must for the foot.

C S T O

Color range : ALL

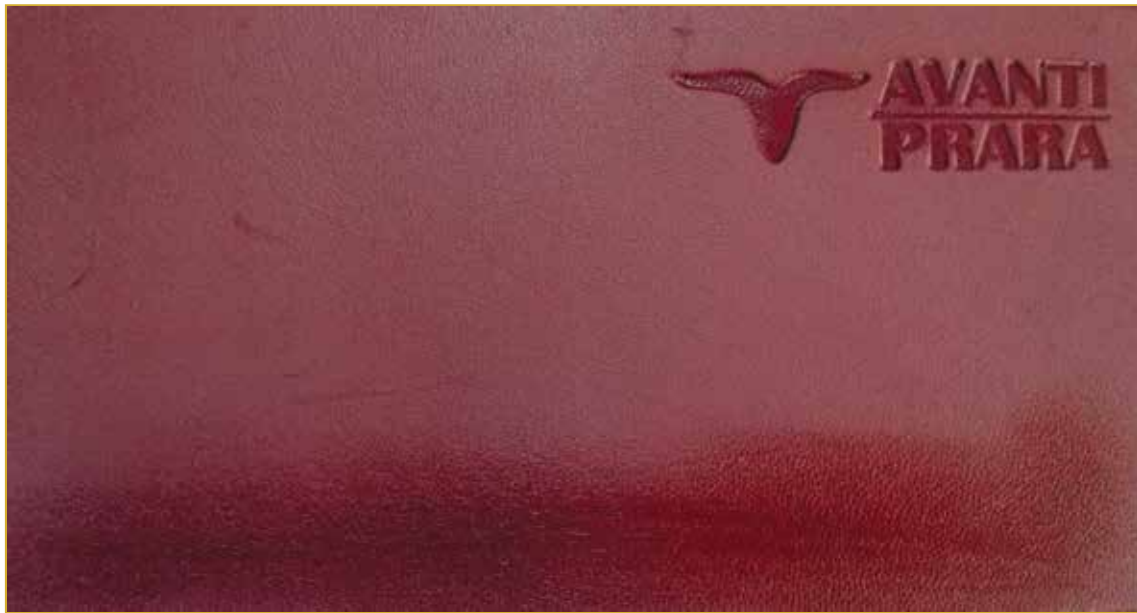
Size : 4.0-7.0SF

Thickness : 0.7-0.9mm

Oil Content : 6-8%



JERICHO



CIGAR



EBONY



MARLIN



MAHOGANY



BROWNIE

Inspired by light and shadow, this one gives the usual brush-off an exciting twist. The dark base shines-on beneath the light top when brushed and is well suited for high-fashion formal women shoes.

C S T O

Color range : ALL
Size : 4.0-7.0SF
Thickness : 0.7-0.9mm
Oil Content : 6-8%



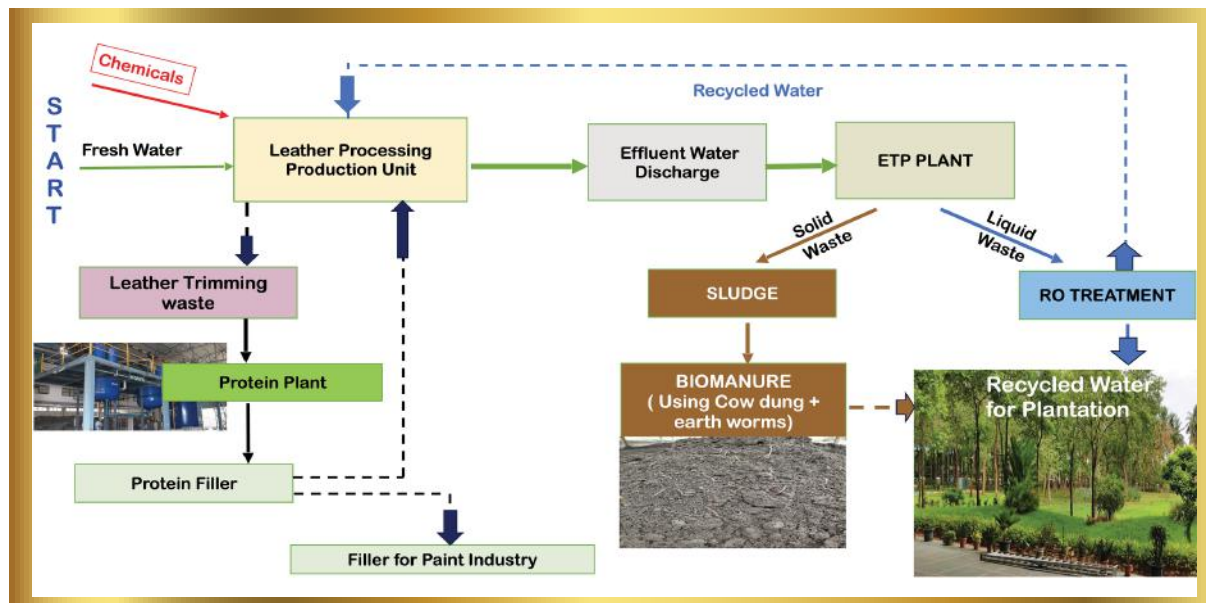
SUSTAINABILITY LEATHER MANAGEMENT

- TYPE OF INPUT RESOURCES USED
 - ▶ Raw Materials ▶ Chemicals
- PROCESS AND CATEGORY FINAL PRODUCTS WE PRODUCE
- ENERGY RESOURCES USED
 - ▶ Low Water ▶ Low Energy
- EMISSION TO ENVIRONMENT
- RECYCLES RESOURCES BACK TO PROCESS

RESPONSIBILITY



PROCESS FLOW CHART



ETP PLANT



SOLAR PLANT



PROTEIN PLANT



BIOMANURE



RAIN WATER HARVESTING

SUSTAINABILITY PRODUCT CATEGORIES

- OLIVE TANNAGE
- ECO FRIENDLY LEATHERS
- BIODEGRADABLE LEATHERS



OLIVE TANNAGE

Olive Tannage - A new technology which is totally green and biodegradable concept established only by very few countable leather manufacturing players in world and we are one among them.

Proud to say we are First to launch this technology and its products from India.

- Pleasantly fragrant, purely vegetable based syrup made from the leaves of Mediterranean olive trees .
- Conventional tanning agents irritate the skin and may cause allergies. Olive leaf extract has been rated “very good” by the Dermatest® seal of approval.
- Conventional tanning agents must be used with utmost care to protect both tannery workers and the environment. Olive leaf extract meets the top standard “Platinum” in the category “Material Health”.
- Olive leaf extract has even been awarded the Cradle to Cradle certificate “ Gold“ for the sustainability of the material flow - Olive tannage and its residues are fully biodegradable materials.
- Olive tannage combines the advantages of a typical vegetable tannage with those of synthetic wet -white tanning systems . Two tanning mechanisms: 1. covalent crosslinking (of amino groups) 2. hydrogen bonds (with collagen -backbone)

Advantages of Using Olive Tannage Leathers - To environment and closely related to SUSTAINABILITY

- No application of certain tanning agents and process chemicals (e.g. heavy metals) in the production of wet-green , green crust and Olivenleder.
- Socially fair, safe and healthy working condition.
- Totally Green and Fully Biodegradable .

OLV HELENA



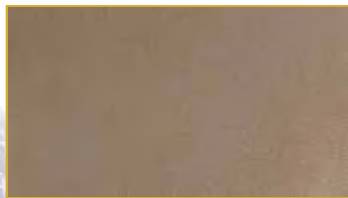
**BRIGHT
RED**



EBONY



CIGAR



ANGORA



MARLIN

Made on a soft Olive tannage base- Hybrid of softness in combination with velvety handle contribute to its wide usage in shoe.

C S T O

Color range : ALL
Size : 3.0-5.0SF
Thickness : 0.7-0.9mm
Oil Content : 6-8%



OLV SONATA



EBONY



CIGAR



TEAK



MARLIN



BRIGHT RED

Made on a soft Olive tannage base, this sheep nappa adds the required eco-friendly touch to any collection.

C S T O

Color range : ALL
Size : 4.0-7.0SF
Thickness : 0.7-0.9mm
Oil Content : 6-8%





ECO FRIENDLY LEATHERS

Eco Friendly leathers includes **CHROME FREE LEATHERS AND METAL FREE LEATHERS.**

There is significant interest in leathers that imply improved environmental performance and usage performance with almost no harm done to mankind. So, how do we interpret the current situation and understand the issues surrounding the interest in "eco leathers"?

The manufacture of leather does have an environmental impact. In the manufacturing process, not all the inputs end up in the leather.

What seems to have happened is that the **gauge of a leather's "eco-ness" is measured by the absence of certain restricted chemicals, such as banned azo dyes, PCP, chrome VI, formaldehyde and an increasing list specified by brands** (stringent test standard set by many European consumers like REACH and slowly being adapted by the States as well) and the method of tannage which results to consideration of the real environmental impact.

And recently with larger focus in caring for the environment, eco labels, requirements from high street retailers or those seeking to gain competitive advantage through product positioning **ECO FRIENDLY LEATHERS** plays a major role.

We, Avanti Prara Leathers, are **THE NUMBER ONE LARGEST CHROME FREE AND METAL FREE LEATHER PRODUCERS IN INDIA** in Goat and Sheep.

Advantages of Using Eco Friendly Leathers - To environment and closely related to SUSTAINABILITY

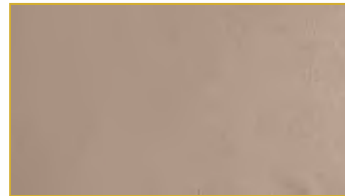
- Non-carcinogenic, Zero Chromium Products and can be freely used for any Children shoes .
- Reduction of Water consumption up to 40%
- Shorter process time
- Cleaner effluent, TDS reduction up to 40%

ECO LEATHERS → ECO-NESS → ECO FRIENDLY .

LUVA CF



CIGAR



ANGORA



EBONY



TEAK



MAHOGANY

A soft smooth chrome-free sheep nappa with warm and luxurious hand feel which makes a great leather for casuals which is also ecologically sustainable.

C S T O

Color range : ALL
Size : 4.0-6.0SF
Thickness : 0.7-0.9mm
Oil Content : 6-8%



VIRA



MAHOGANY



CIGAR



ANGORA



TEAK



MARLIN

A Classic Metal -free sheep Napa with wet and waxy hand feel which makes a great leather for dress & dress casuals which is also economic and ecologically sustainable.

C S T O

Color range : ALL
Size : 4.0-7.0SF
Thickness : 0.7-0.9mm
Oil Content : 6-8%



MONTAE



EBONY



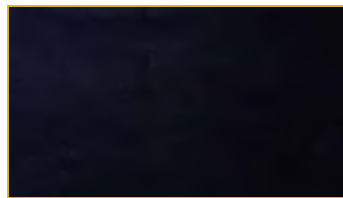
MAHOGANY



BROWNIE



TEAK



MARLIN

A Metal -free sheep Napa with wet and waxy hand feel which makes a great leather for natural & comfort casuals. This is ecologically sustainable.



C S T O	
Color range	: ALL
Size	: 4.0-7.0SF
Thickness	: 0.7-0.9mm
Oil Content	: 6-8%



PARKA



TEAK



MARLIN



CIGAR



EBONY



MAHOGANY

Natural brilliance of colour inspired from "art deco" & fine pebble effect on the go- green soft base makes it ideal material for future trends.

C S T O

Color range : ALL
Size : 3.0-6.0SF
Thickness : 0.8-1.0mm
Oil Content : 6-8%



MALTA



CIGAR



EBONY



MARLIN



BROWNIE



MAHOGANY

Classic brilliance of colour inspired from "art deco" & fine pebble effect on the go- green soft base makes it ideal material for future trends.

C S T O

Color range : ALL
Size : 3.0-6.0SF
Thickness : 0.8-1.0mm
Oil Content : 6-8%





BIODEGRADABLE LEATHERS

Leather is a premium -class natural material and is expected to have a long lifespan. In order to achieve this long endurance, it needs a certain protection against microbiological decay.

A combination of tanning agents (synthetic retannage) will stabilize the collagen to an extent that the leather cannot be classified as easily biodegradable if the standard for chemical products or household waste are applied.

At the end of the life cycle, **if the leather article can blend back into nature and not leave any permanent traces on the waste dump, it's a bonus.**

One option is composting, where via biodegradation leather making process (using certain chemicals as biodegradable polymers and process) and developing biodegradable leathers which can be transformed in a valuable product like fertilizer raw materials.

We, Sunshine- Prara Leathers, are **THE ONE OF THE LEADING BIODEGRADABLE LEATHERS' MANUFACTURES IN INDIA** in Sheep and Goat.

Advantages of Using Biodegradable Leathers - To environment and closely related to SUSTAINABILITY

- The BIODEGRADABLE leather manufactured by Avanti(Sunshine) Leathers does not leave any chemical substance in the leather or its degradation products.
- BIODEGRADABLE means complete disposal of Finished Leather into Land/ Soil/ Earth and makes it into a natural Fertilizer.
- Biodegradable process (Disposing into Land/ Soil/ Earth) takes around 5-6 months to dispose and convert into natural fertilizer.

The production lead time of Biodegradable leather is just like normal leather lead time.

Leather originates in nature and can biodegrade back into nature.

MADRID



CIGAR



EBONY



BROWNIE



MAHOGANY



ANGORA

Select vintage goat leather with Slight oily and waxy hand feel for semi dressy shoes.

C S T O

Color range : ALL
Size : 4.0-7.0SF
Thickness : 0.8-1.0mm
Oil Content : 8-10%



AMARA KID



MARLIN



MAHOGANY



EBONY



BROWNIE



NERO

A soft natural retro look with the silky waxy touch which gives relaxed lighting effect on being moulded in to daily comfort shoes construction An ideal choice for natural soft.

C S T O

Color range : ALL
Size : 4.0-7.0SF
Thickness : 0.7-0.9mm
Oil Content : 8-10%



CALEO



EBONY



BROWNIE



MARLIN



MAHOGANY



NERO

Effect is inspired from the stones of statues and rustic walls , wet touch and darkening on being polished makes it a choice for ruff-tuff shoes.

C S T O

Color range : MEDIUM - DARK

Size : 4.5-7.0SF

Thickness : 0.9/1.1mm

Oil Content : 10-12%



KANO



EBONY



CIGAR



MARLIN



MAHOGANY



NERO

A rugged look attributed to the material by tumble wash still maintaining the softness with powdery and warm waxy hand feel.

C S T O

Color range : MEDIUM - DARK

Size : 4.5-7.0SF

Thickness : 0.9/1.1mm

Oil Content : 8-10%



TEXAS



BROWNIE



EBONY



MAHOGANY



BITTER CHOCO



NERO

Effect is inspired from the stones of statues and rustic walls, wet touch and darkening on being polished makes it a choice for ruff-tuff comfort shoes.

C S T O

Color range : MEDIUM - DARK

Size : 4.0-6.0SF

Thickness : 0.8-1.0mm

Oil Content : 10-12%



PONCHO



EBONY



CIGAR



TEAK



MAHOGANY



MARLIN

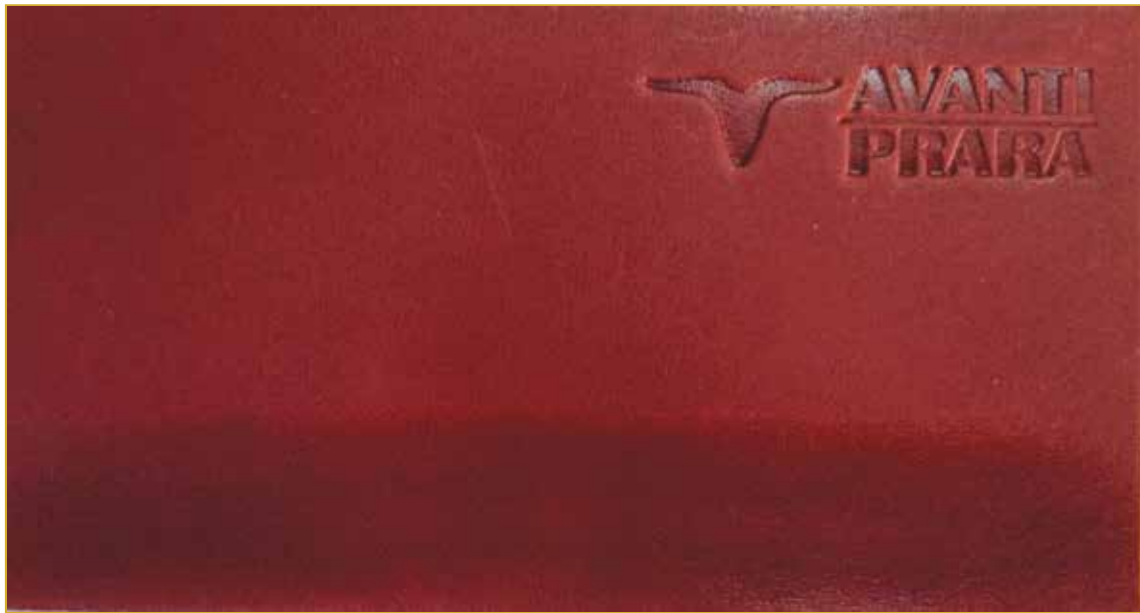
A slight oily effect on a Oily & Waxy suede with a character of darkening. It makes it a perfect material for modern casuals.

C S T O

Color range : MEDIUM - DARK
Size : 4.0-6.0SF
Thickness : 0.8-1.0mm
Oil Content : 10-12%



CYRUS



CIGAR



MAHOGANY



MARLIN



BROWNIE



EBONY

A bouncy body with full veg hand feel and natural look, giving a feeling of second skin during shoe crafting - Suitable for Mens and Womens shoes.

C S T O

Color range : MEDIUM - DARK
Size : 4.0-7.0SF
Thickness : 0.8-1.0mm
Oil Content : 10-12%



JUPITER



EBONY



MARLIN



MAHOGANY



BROWNIE



NERO

A bouncy body with the soft hand feel and natural look, giving a feeling of second skin while shoe crafting.

C S T O

Color range : ALL
Size : 5.0-8.0SF
Thickness : 0.9-1.1mm
Oil Content : 10-12%



POP CRUNCH / VERTICAL CRUNCH

TEAK

CIGAR

EBONY

MAHOGANY

MERLIN

The light pull-up effect and natural touch with crunchy feel (Pop Crunch and Vertical crunch) makes this material ideal for plush shoes and handbags. It adds a vintage look and exudes elegance.

C S T O

Color range : MEDIUM - DARK

Size : 6.0-9.0SF

Thickness : 0.7-0.9mm

Oil Content : 6-8%



ETHEREAL CASUALS



TRAPPER
DEER GOAT
DEER SHEEP
ALPINE



BURRO
AKYUA NABUK
ROXY
STROMBOLI



CREPITIO
GOLDDUST
MAREL CROCO
MAREL SAICOS



TRAPPER



MARLIN



EBONY



CIGAR



TEAK



ANGORA

Soft and full body with a rich velvety handfeel this material adds both visual and tactile interest to any collection.

C S T O

Color range : ALL

Size : 4.0-7.0SF

Thickness : 0.8-1.0mm

Oil Content : 6-8%



DEER GOAT



CIGAR



EBONY



ANGORA



MAHOGANY



MARLIN

Definite pattern which ensures better cutting and round feel makes it ideal for wide range of mouldability.

C S T O

Color range : ALL
Size : 4.0-7.0SF
Thickness : 0.8-1.0mm
Oil Content : 6-8%



DEER SHEEP



MARLIN



MAHOGANY



EBONY



CIGAR



ANGORA

The supple, pliable, soft feel and warm, cheesy touch is the feel-good element which makes this one unique. The look increases the desirability further.

C S T O

Color range : ALL

Size : 6.0-9.0SF

Thickness : 0.7-0.9mm

Oil Content : 6-8%



ALPINE



MAHOGANY



MARLIN



CIGAR



ANGORA



NERO

Natural shine article with soft and silky touch makes it most preferred for casuals and hand bags.

C S T O

Color range : ALL

Size : 6.0-9.0SF

Thickness : 0.7-0.9mm

Oil Content : 6-8%



BURRO



ANGORA



EBONY



MARLIN



MAHOGANY



BRIGHT RED

Suede with a butter hand feel, electrifying sheen and a product uplift from commercial one.

C S T O

Color range : ALL
Size : 4.0-7.0SF
Thickness : 0.7-0.9mm
Oil Content : 10-12%



AKYUA NABUK



CIGAR



PEACOAT



BRICH BEIGE



BRILLIANT RED



ORILE

Soft and full body with a rich velvety handfeel this material adds both visual and tactile interest to any collection.

C S T O

Color range : ALL
Size : 4.0-7.0SF
Thickness : 0.8-1.0mm
Oil Content : 6-8%



ROXY

**AVANTI
PRARA**



MARLIN



MAHOGANY



EBONY



CIGAR



NERO

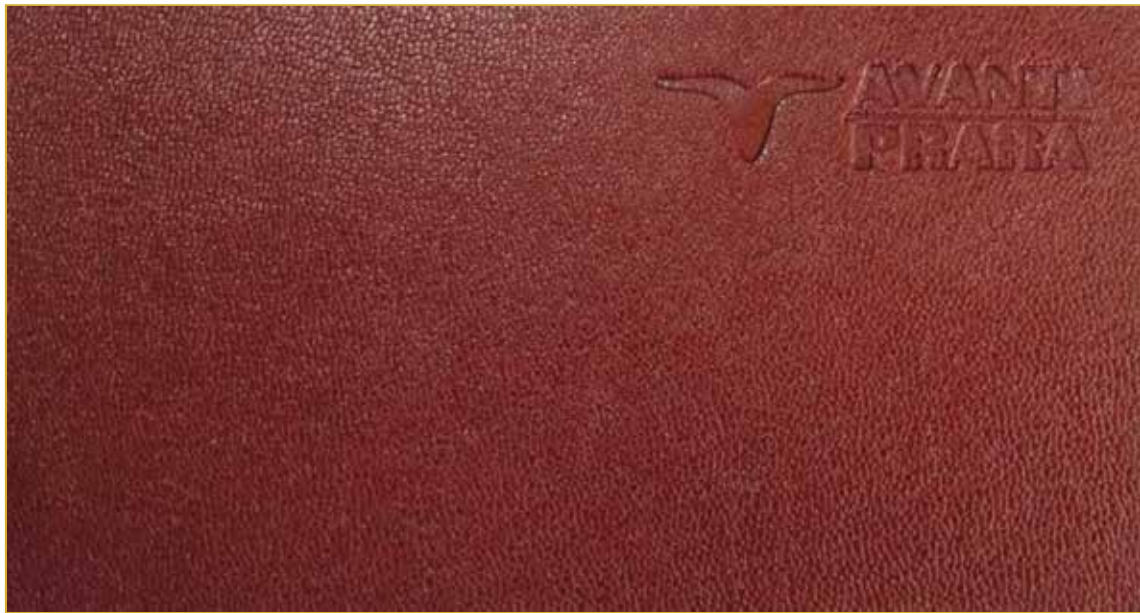
Shrunken grain with economic price point suitable for Dress casual.

C S T O

Color range : ALL
Size : 4.0-7.0SF
Thickness : 0.8-1.0mm
Oil Content : 6-8%



STROMBOLI



BRONZE



MAHOGANY



GOLD



COPPER



PEWTER

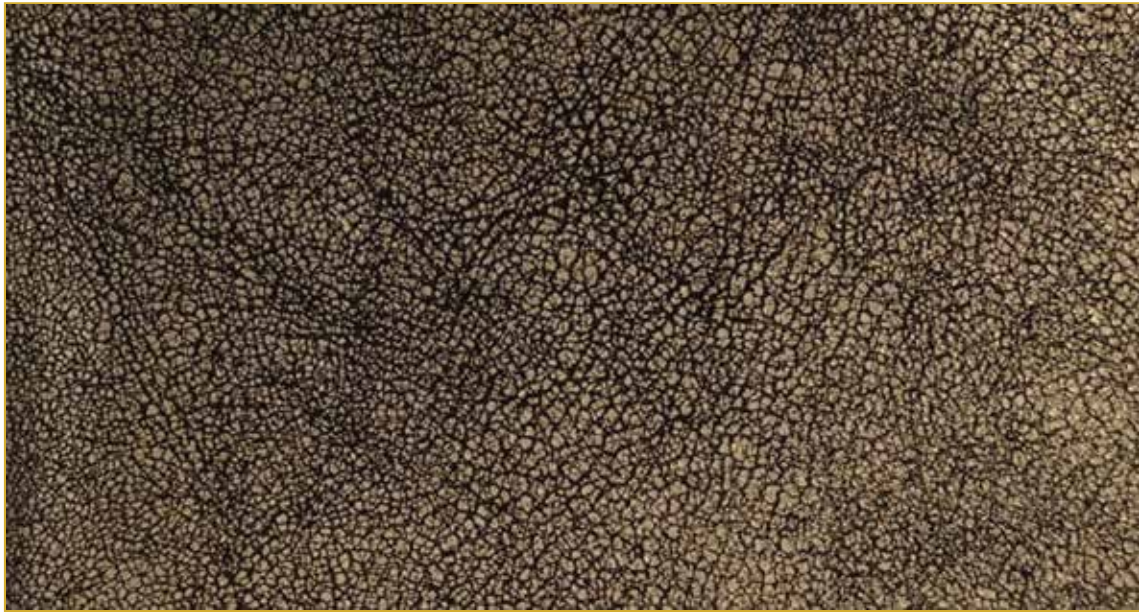
Grainy and metallic " effect on the soft base makes it a suitable choice where natural inspirational material is desired for the new creation.

C S T O

Color range : ALL
Size : 3.5-6.0SF
Thickness : 0.8-1.0mm
Oil Content : 8-10%



CREPITIO



GOLD



SILVER



COPPER



BRONZE



PEWTER

Its an interesting variant to the Fall theme, which add more aroma and style to the view of the high fashion stylish.

C S T O

Color range : ALL

Size : 4.0-7.0SF

Thickness : 0.7-0.9mm

Oil Content : 6-8%

GOLDDUST



BROWNIE



EBONY



CIGAR



MAHOGANY



ANGORA

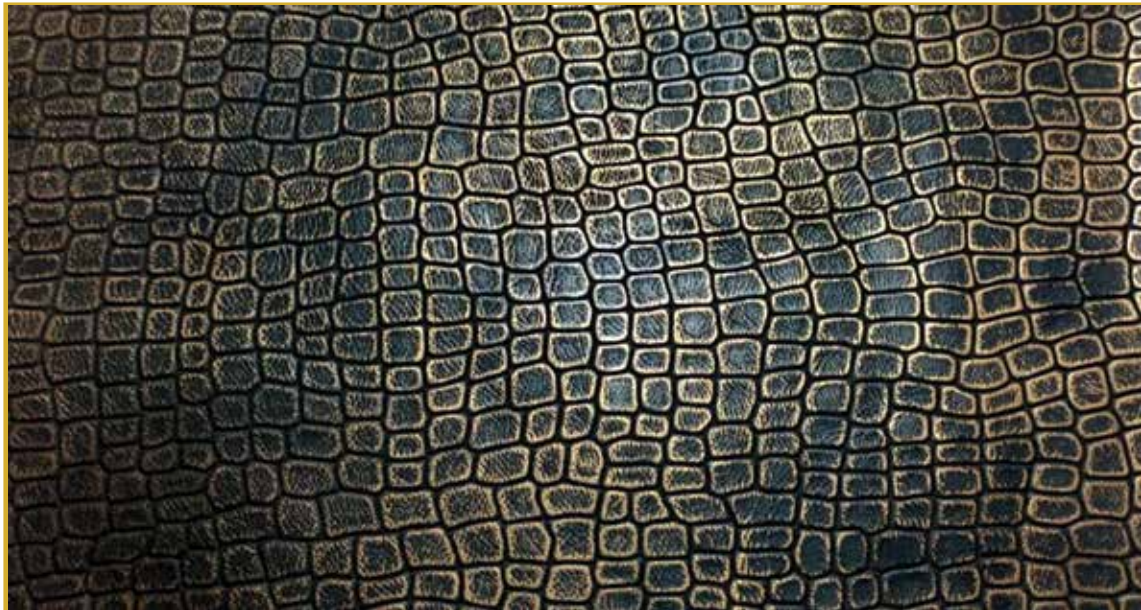
The subdued lustrous appearance with a apparent crumpled effect and a soft hand feel makes it ideal material for co-creation.

C S T O

Color range : ALL
Size : 4.0-7.0SF
Thickness : 0.8-1.0mm
Oil Content : 7-9%



MAREL CROCO



GOLD



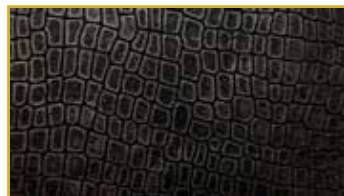
BRONZE



NAVY



COPPER



PEWTER

Croco print with touch metallic surface effect created with human intervention makes it suitable for hand bags & combination creations.

C S T O

Color range : ALL
Size : 4.0-7.0SF
Thickness : 0.7-0.9mm
Oil Content : 7-9%





BRONZE



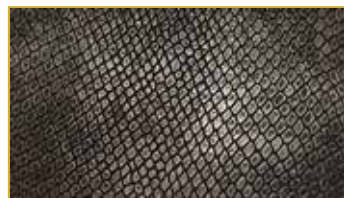
GOLD



NAVY



COPPER



PEWTER

Snake print with touch metallic surface effect created with human intervention makes it suitable for hand bags & combination creations.

C S T O

Color range : ALL
Size : 4.0-7.0SF
Thickness : 0.7-0.9mm
Oil Content : 7-9%



ONIRIC DREAM



BIANCO



BUTTER



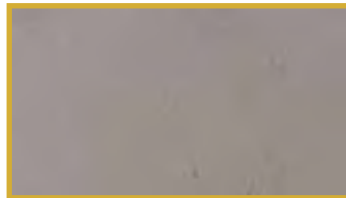
SEMOULE



CAMEO



ANGORA



ASPHALT



SUNNY YELLOW



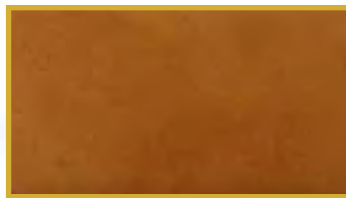
TEAK



REROOTED



TOFFEE



OCRA



SUNSET



BOMBAY BROWN



BRUNO



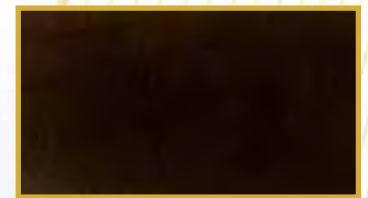
JADE STONE



ASHLEY BLUE



GREEN MOSS

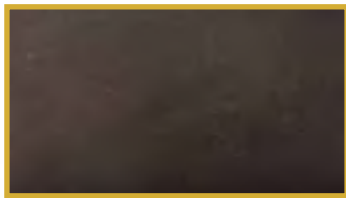


DARK OLIVE



AZTEC

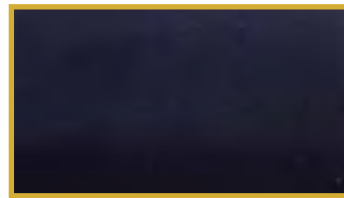
REVOLUXE



GRAPHITE



BRICK



PEACOCK



MAHOGANY



MARLIN



FONDETE



CIGAR



EBONY



RETHINK



NERO



OYSTER



SUDAN



AURORA RED



LACCA



DRIED ROSE



SAILOR BLUE



CABERNET



BROWNIE



STEEL



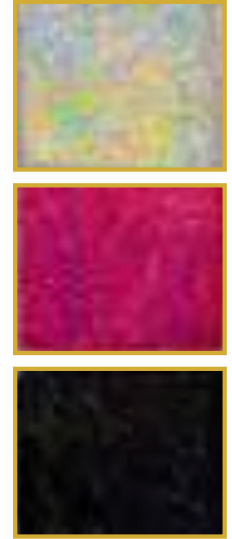
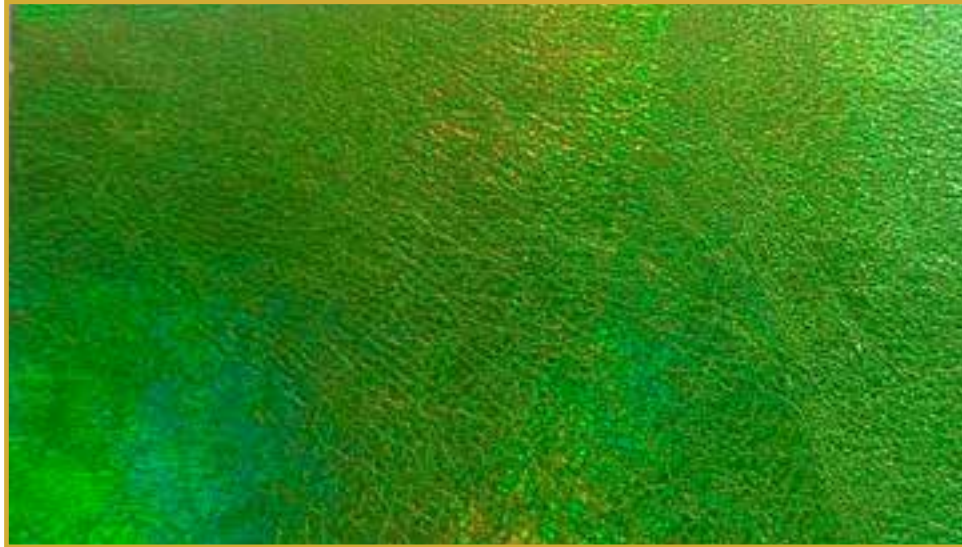


FALL WINTER 2022 / 23

PRINTS AND FANTASIES COLLECTION



AVFC G01



A irresdient foil which makes unique offering to high end night life.

C S T O

Color range: APS | Size : 6.0-9.0SF
Thickness: 0.7/0.9mm | Oil Content : 6-8%

DISTRESS FOIL



C S T O

Color range: APS | Size : 4.0-7.0SF
Thickness: 0.7/0.9mm | Oil Content : 6-8%

Suede with perfect match of antique look -best suited for all collection.

AVFC G05



CSTO

Color range: APS | Size : 4.0-7.0SF
Thickness: 0.7/0.9mm | Oil Content : 6-8%

Nubuck with crackle effect
and gives a special look.

ANTIQUE FOIL

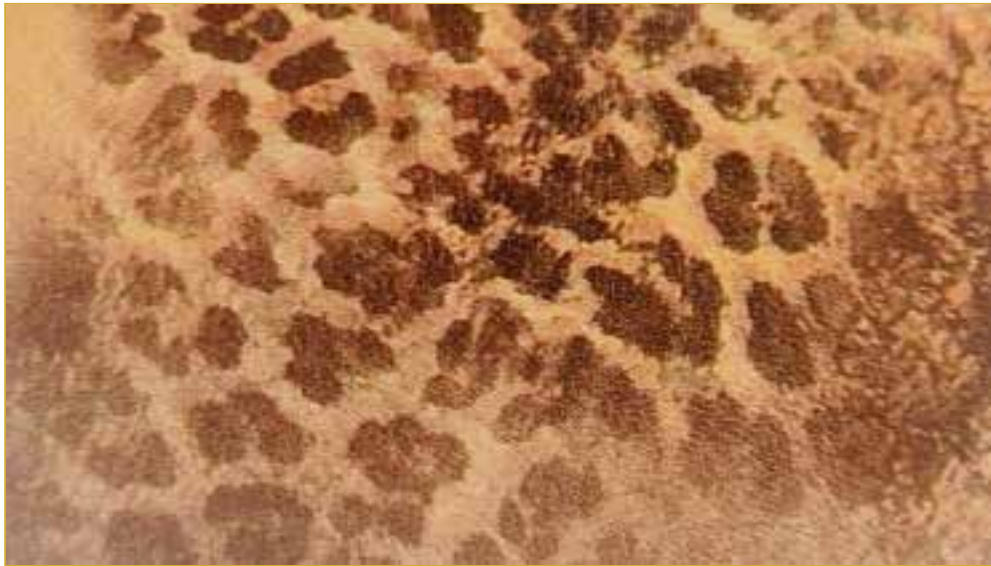


CSTO

Color range: APS | Size : 4.0-7.0SF
Thickness: 0.7/0.9mm | Oil Content : 6-8%

Suede with perfect match of antique look
-best suited for spring 23 collection.

LEO MIX



CSTO

Color range: APS | Size : 6.0-9.0SF
Thickness: 0.7/0.9mm | Oil Content : 6-8%

A perfect new look aged foil.

CROCO IRIS



CSTO

Color range: APS | Size : 4.0-7.0SF
Thickness: 0.7/0.9mm | Oil Content : 6-8%

Croco foil with Irresdicent look.

PYTHON S 301



C S T O

Color range: APS | Size : 4.0-7.0SF
Thickness: 0.7/0.9mm | Oil Content : 6-8%

Python Foil in sheep base matching to new SS 23 concept.

AVFC G11

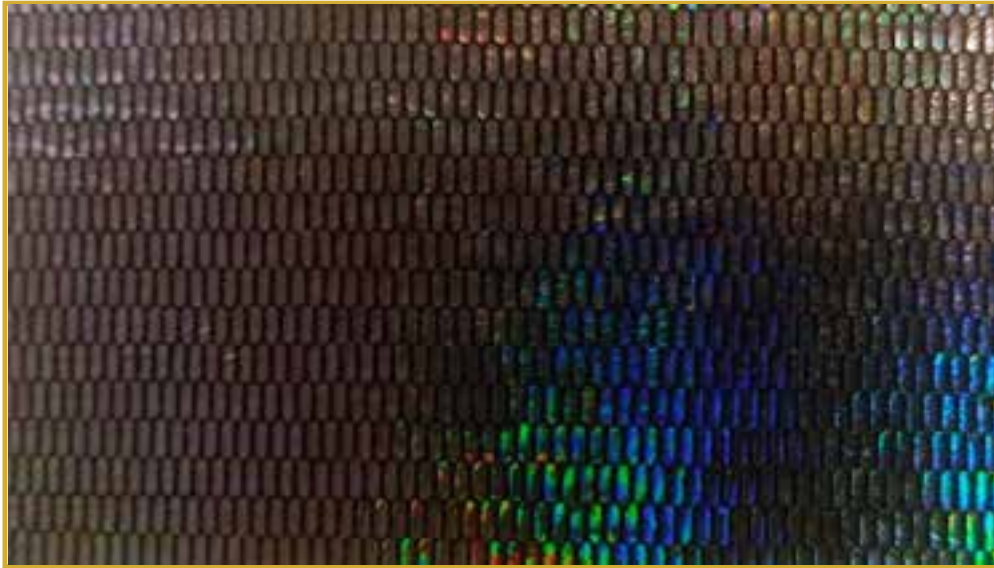


C S T O

Color range: APS | Size : 6.0-9.0SF
Thickness: 0.7/0.9mm | Oil Content : 6-8%

Saicos irredescent Foil in Goat base matching to new SS 23 concept

AVFC G13

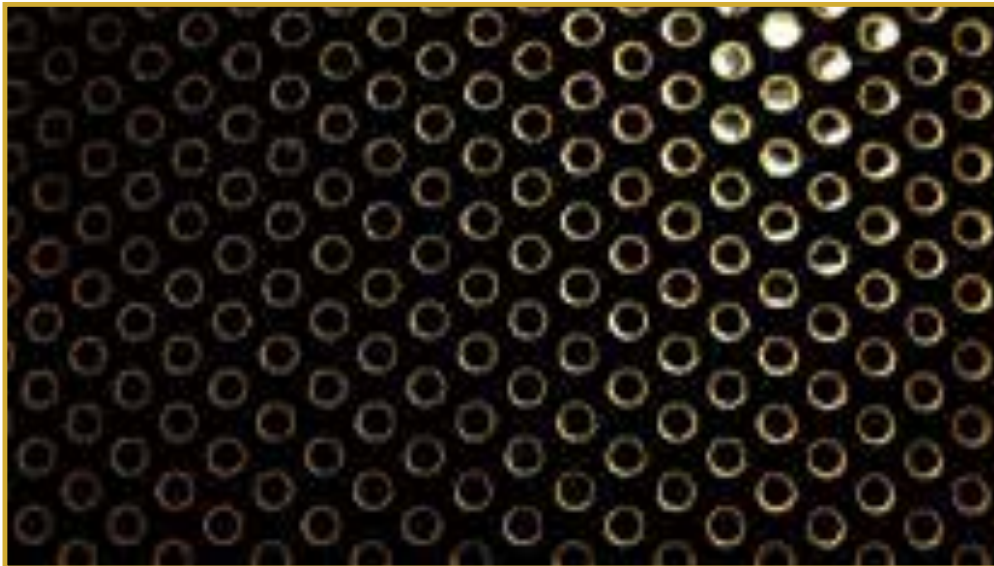


CSTO

Color range: APS | Size : 4.0-7.0SF
Thickness: 0.7/0.9mm | Oil Content : 6-8%

A new design in foil with an garment and classy look - best suited for combination shoes.

AVFC G14



CSTO

Color range: APS | Size : 4.0-7.0SF
Thickness: 0.7/0.9mm | Oil Content : 6-8%

Mini irredescent foil with a print look stand closer to the new trends.

AVFC G17



CSTO

Color range : ALL | Size : 4.0-7.0SF
Thickness : 0.7/0.9mm | Oil Content : 6-8%

New variety Snake emboss.

AVFC G19



CSTO

Color range : ALL | Size : 4.0-7.0SF
Thickness : 0.7/0.9mm | Oil Content : 6-8%

Deer Goat foil.

CHEVRON



C S T O

Color range: ALL | Size : 5.0-7.0SF
Thickness: 0.7/0.9mm | Oil Content : 6-8%

Unique design print.

TABU



C S T O

Color range: ALL | Size : 5.0-7.0SF
Thickness: 0.7/0.9mm | Oil Content : 6-8%

Breathable print.

WEAVE



CSTO

Color range: ALL | Size : 5.0-7.0SF
Thickness: 0.7/0.9mm | Oil Content : 6-8%

Mesh Print at an commercial version.

DIAMOND



CSTO

Color range: ALL | Size : 5.0-7.0SF
Thickness: 0.7/0.9mm | Oil Content : 6-8%

Print in diamond shape and
also used as breathable one.



FALL WINTER
2022 / 23

INDIA PRODUCTION UNIT
(Aerial View)



CONTACT US

CORPORATE OFFICE

AP -86/29, H BLOCK ,2ND AND 12 TH MAIN ROAD
ANNA NAGAR, CHENNAI, TAMILNADU ,PC 600040

Tel: + 91 44 2616 0191

AVANTI LEATHERS

AVANTI LEATHERS LIMITED
KAMBAKAM VILLAGE, VARADIAHPALEM POST AND MANDAL
CHITTOOR DISTRICT, ANDHRA PRADESH,INDIA PC-517541

TEL : + 91 8576 249930/31

PRARA LEATHERS

PRARA LEATHERS PVT LIMITED
NO: 31/2A-2 AMMOOR ROAD, MANTHANGAL VILLAGE, RANIPET
VELLORE DISTRICT, TAMILNADU, INDIA PC 632402

TEL : + 91 4172 275699/799

Email:

ravi@praraleathers.in
ravi@avantileathers.com
customercare@avantileathers.com
info@praraleathers.in

Website:

www.avantileathers.com
www.praraleathers.in

